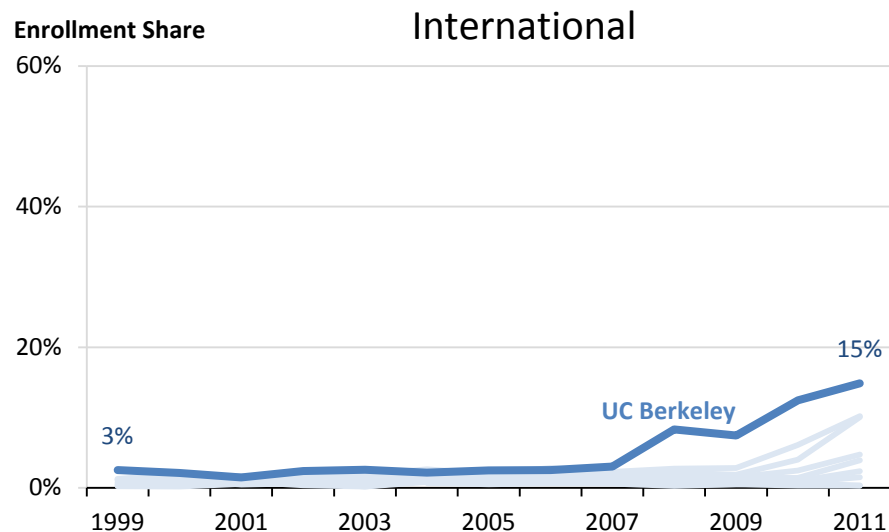
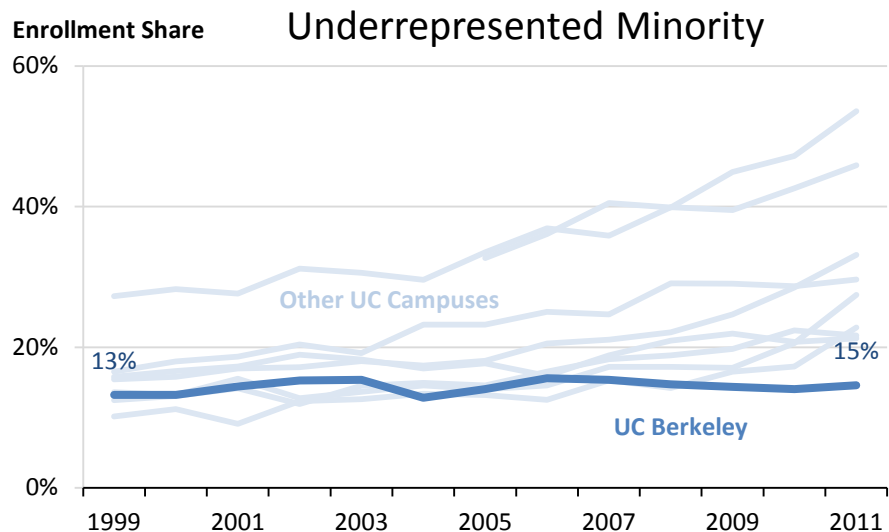
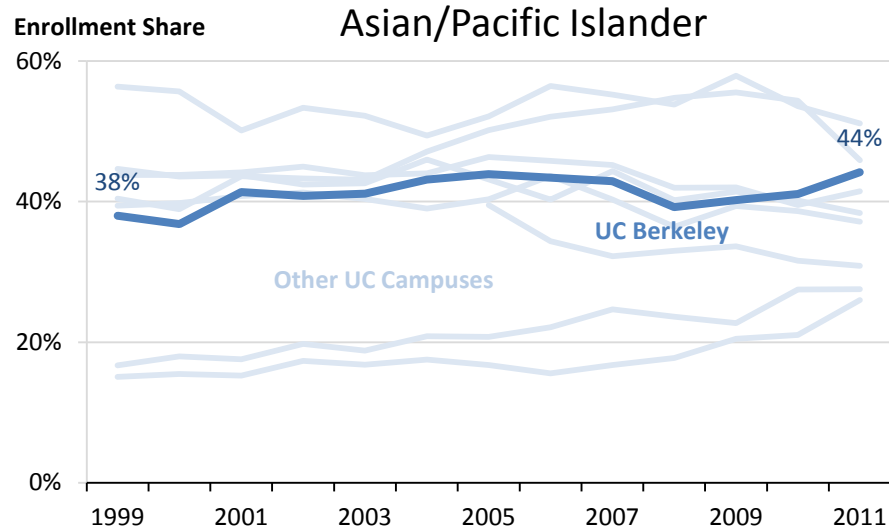
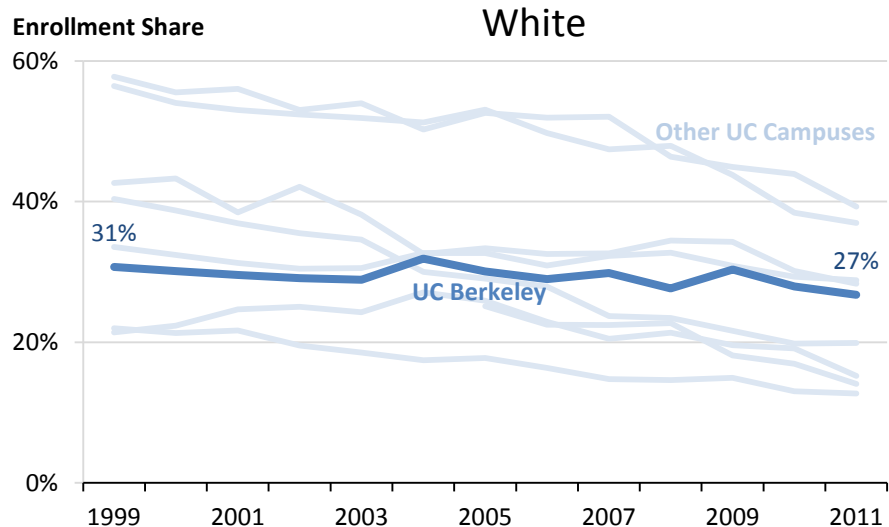


Overview of UC Berkeley Undergraduate Demographics and Experiences

Prepared by Equity & Inclusion and
Office of Planning & Analysis

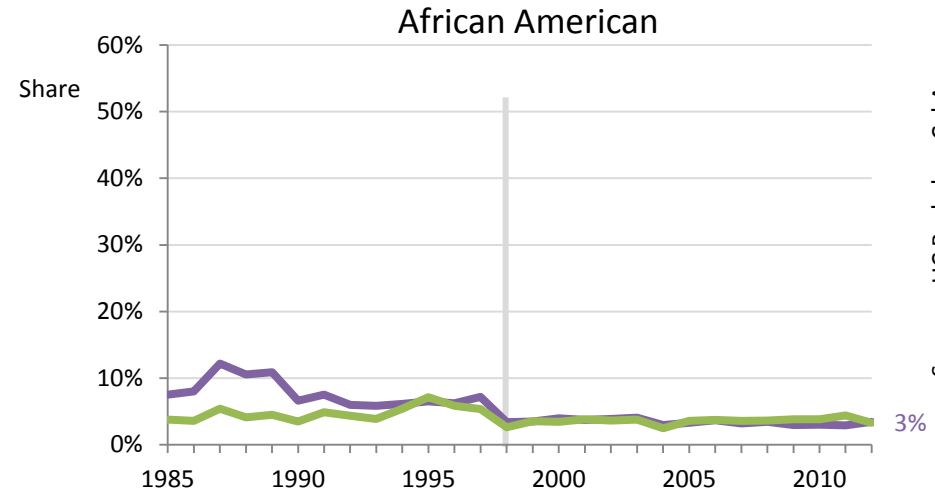
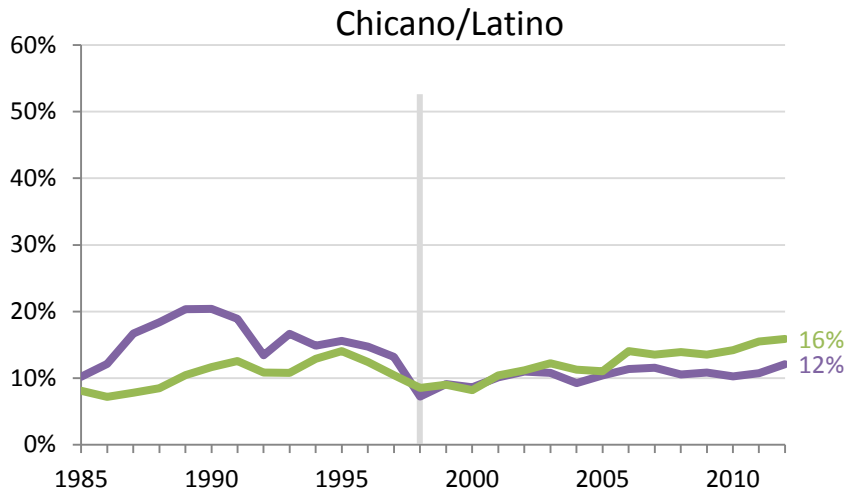
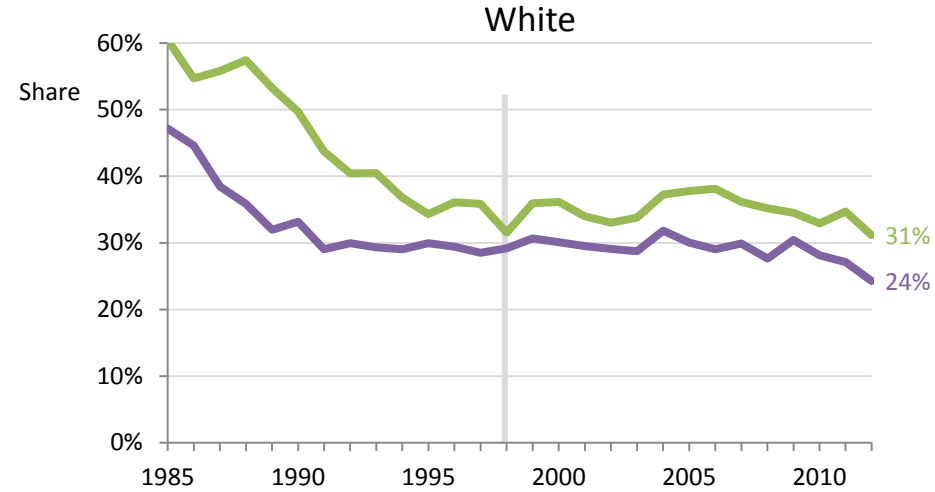
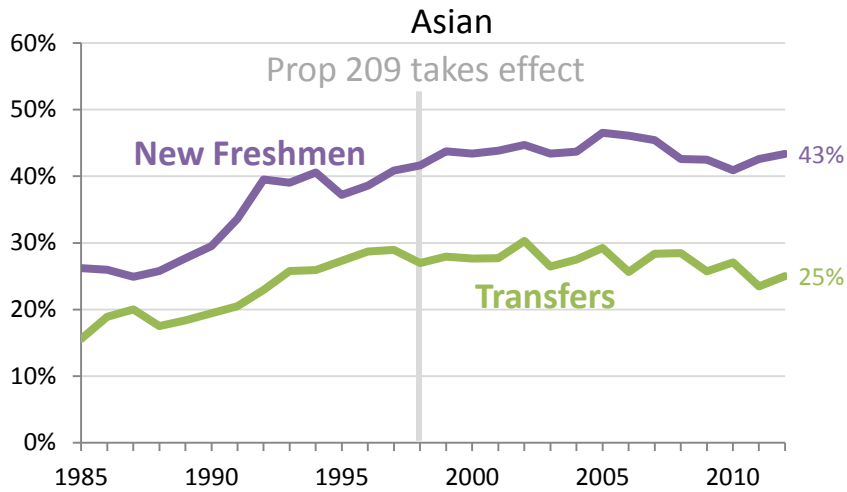
August 2013

UC New Freshmen Enrollment Trends



URM = Underrepresented Minority (Chicano/Latino, African American, American Indian/Alaskan Native)

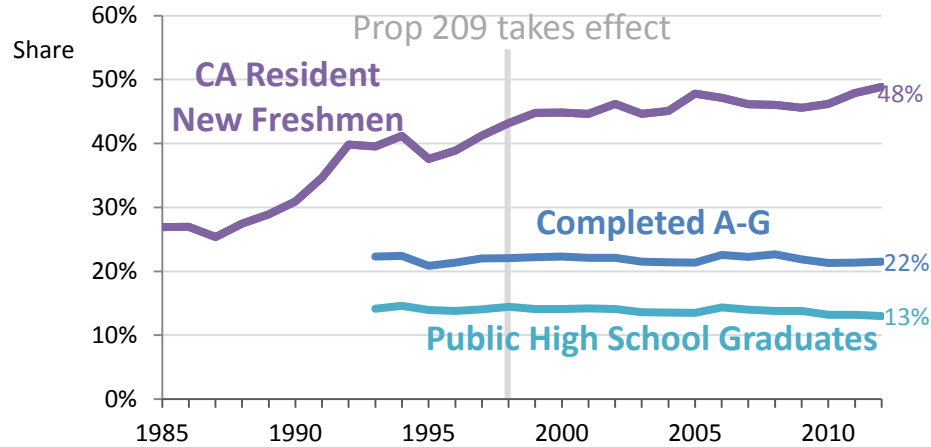
New Undergraduate Student Shares by Race/Ethnicity, 1985-2012



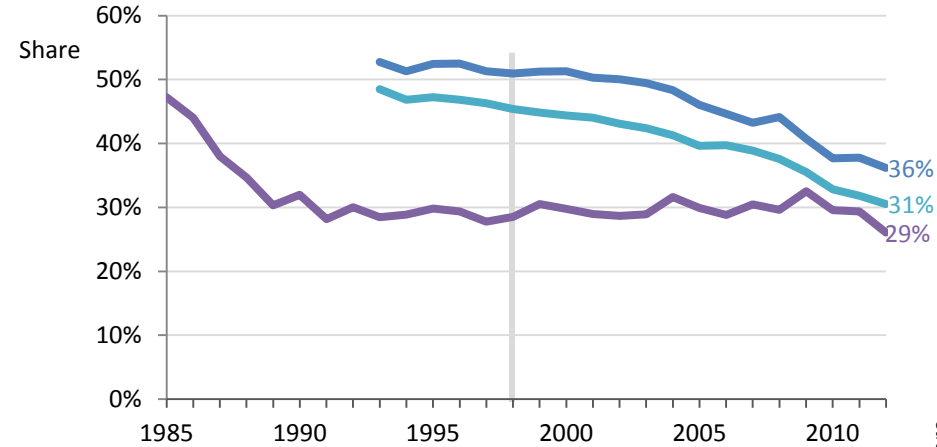
Source: UC Berkeley, Cal Answers

California Resident Shares by Race/Ethnicity, 1985-2012

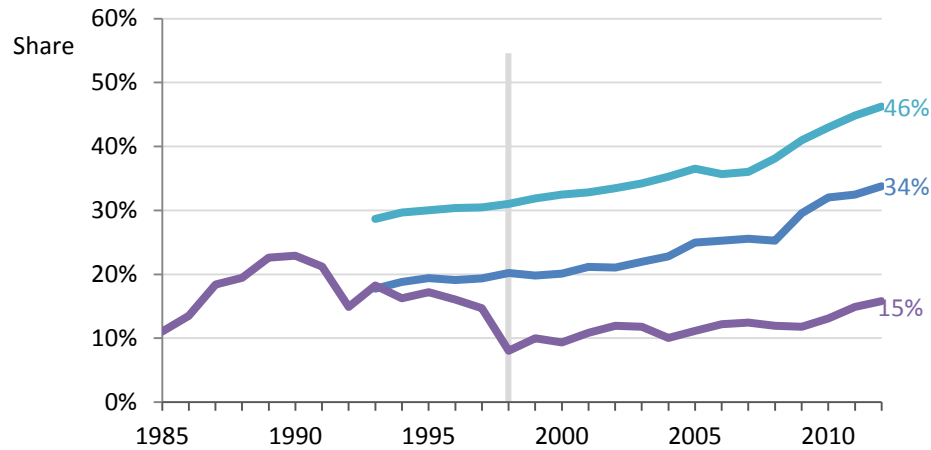
Asian



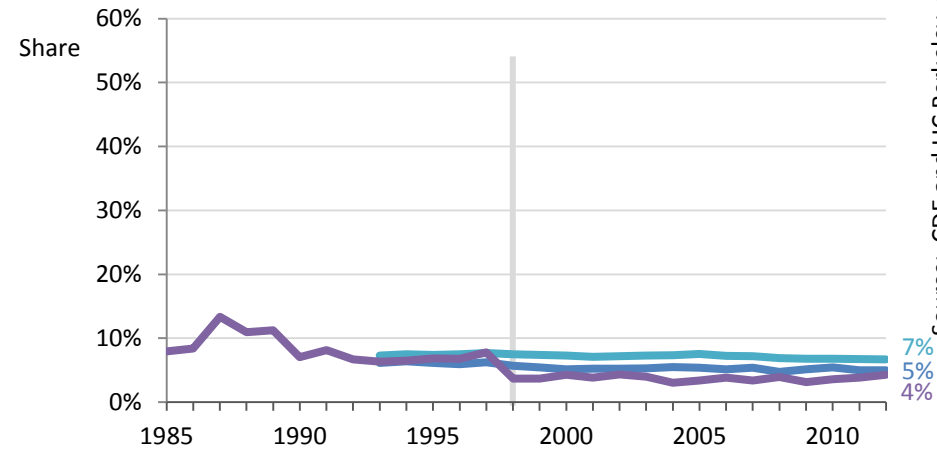
White



Chicano/Latino



African American

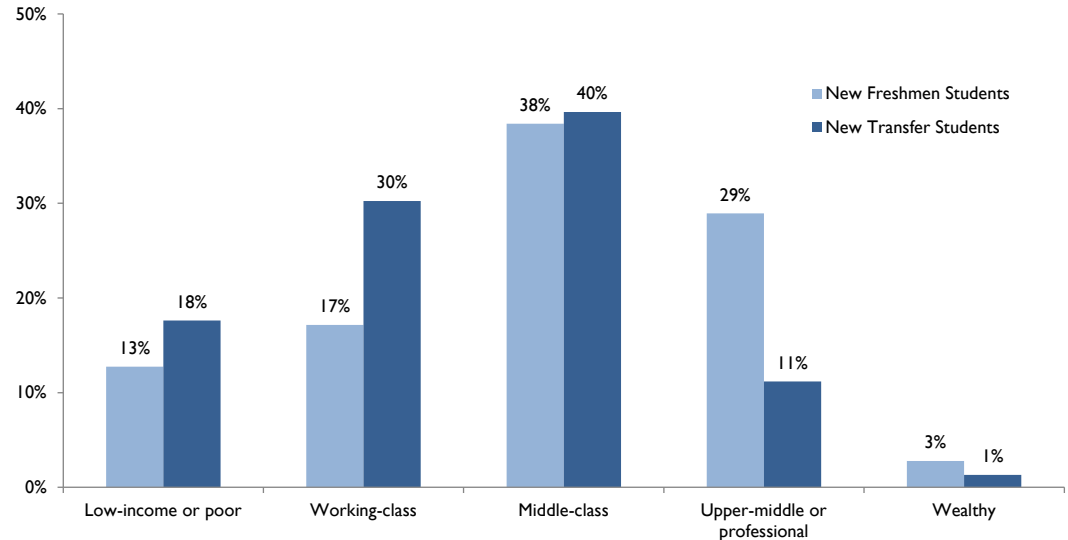


Source: CDE and UC Berkeley, Cal Answers

Fall 2012 Undergraduate Profile

Total Students		25,774
Women	52%	13,492
Men	48%	12,282
Transfers	22%	<i>(of undergrads)</i>
Reentry (Age 25+)	7%	<i>(of undergrads)</i>
African American/ Black	4%	874
Native American/ Alaskan Native	1%	196
Asian/Pacific Islander	44%	10,108
Chicano/Latino	14%	3,259
White	32%	7,464
Race/Ethnicity Unknown	5%	1,204
Total Domestic	100%	23,105
International	10%	2,669

Social Class of New UC Berkeley Students, by Admit Status:
"Which of the following best describes your social class when you were growing up?"
Source: 2012 Survey of New Students

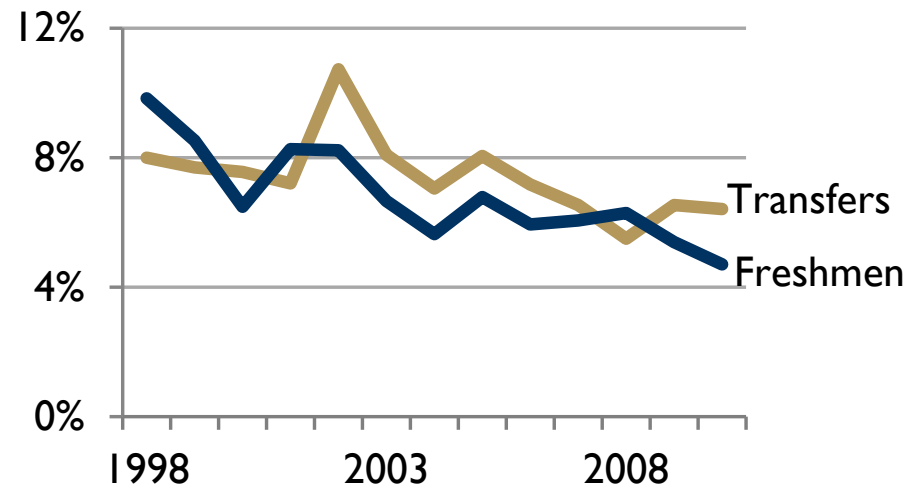


First Generation College

45% of new transfer students reported in the 2012 Survey of New Students that neither of their parents has a 4-year college degree (earned either in or outside of the United States), compared to 27% of new freshmen students.

Historical & Current Probation Stats

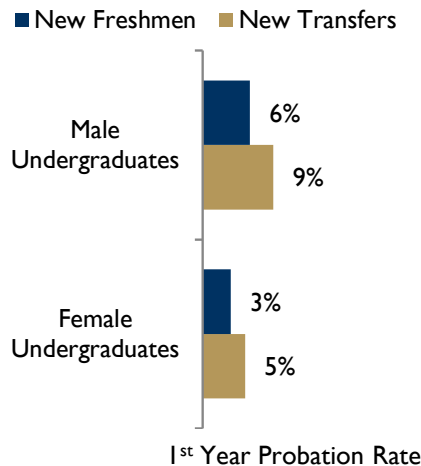
1st year probation rates at UC Berkeley have steadily declined



- For the Fall 2011 entering cohort, freshmen had a 1st year probation rate of 4%, compared to 7% for transfer entrants

Demographic Profile of Students on 1st Year Probation (Fall 2011 cohort)

Males, International Transfer Students and Underrepresented Minority (UREM) Freshmen Have Higher Probation Rates than Peers



1st Year Probation Rates by Group, Fall 2011 Cohort

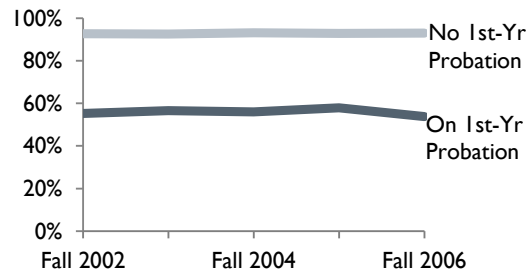
	New Freshmen	New Transfers
African American	10%	10%
Chicano/Latino	6%	4%
Asian	4%	7%
White	3%	4%
CA Resident	4%	6%
Out-of-state (domestic)	6%	5%
International	3%	12%

Note: the rate for each respective group in the table above excludes student athletes

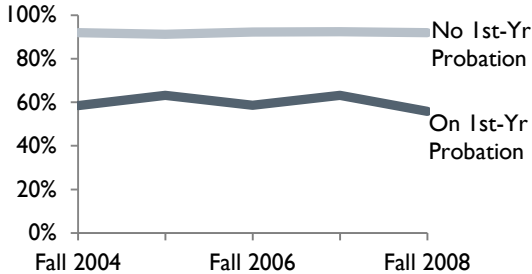
The Impact of 1st Year Academic Probation on Graduation Rates

Graduation Rates by Probation Status

Freshman 6-year grad rate

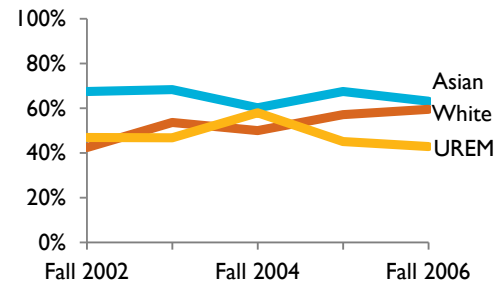


Transfer 4-year grad rate

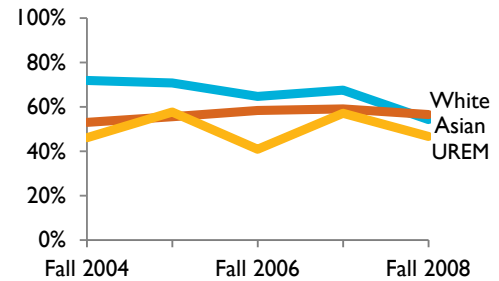


Graduation Rates of Students Placed on 1st Year Probation, by Race/Ethnicity

Freshman 6-yr grad rate (On 1st-Yr Probation)



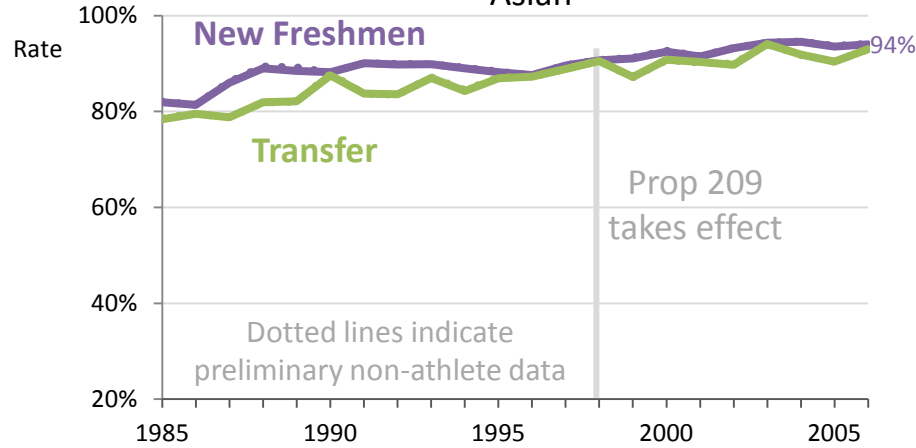
Transfer 4-yr grad rate (On 1st-Yr Probation)



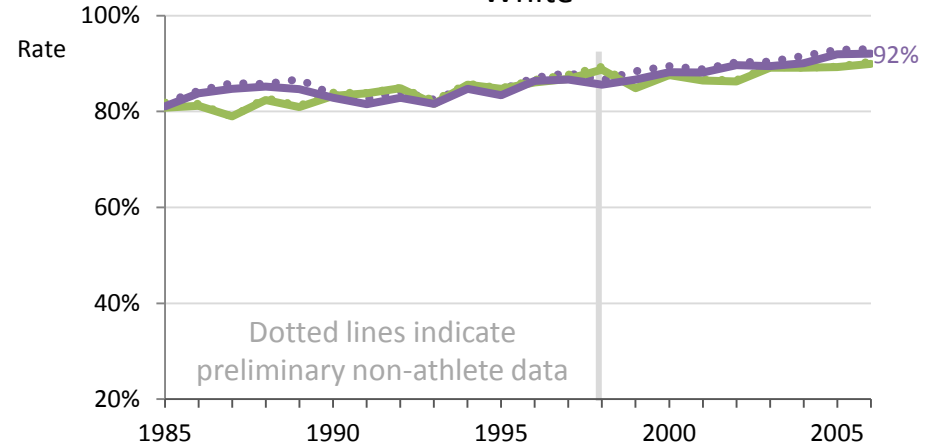
Source: Cal Answers (Undergraduate Cohorts)

Undergraduate Graduation Rates by Race/Ethnicity, 1985-2006 Fall Cohorts

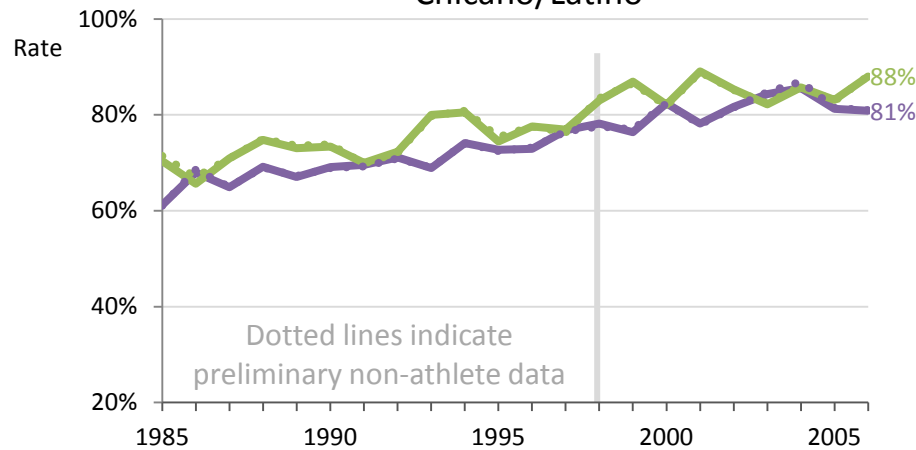
Asian



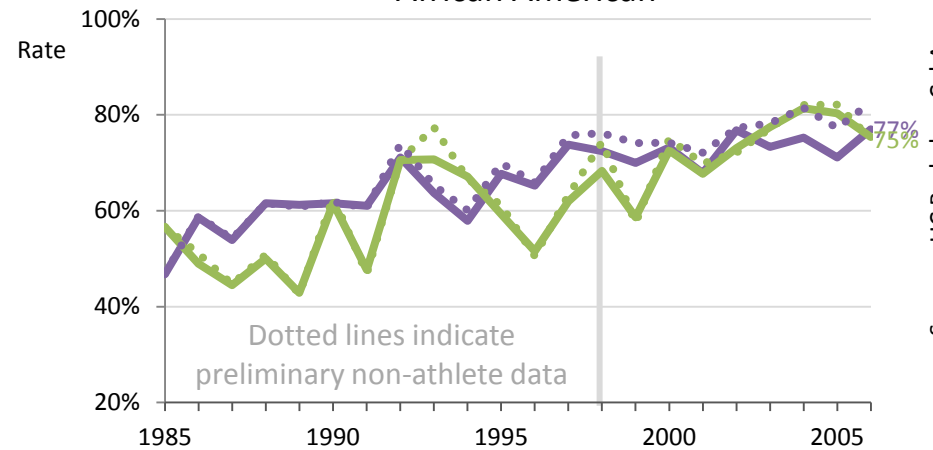
White



Chicano/Latino



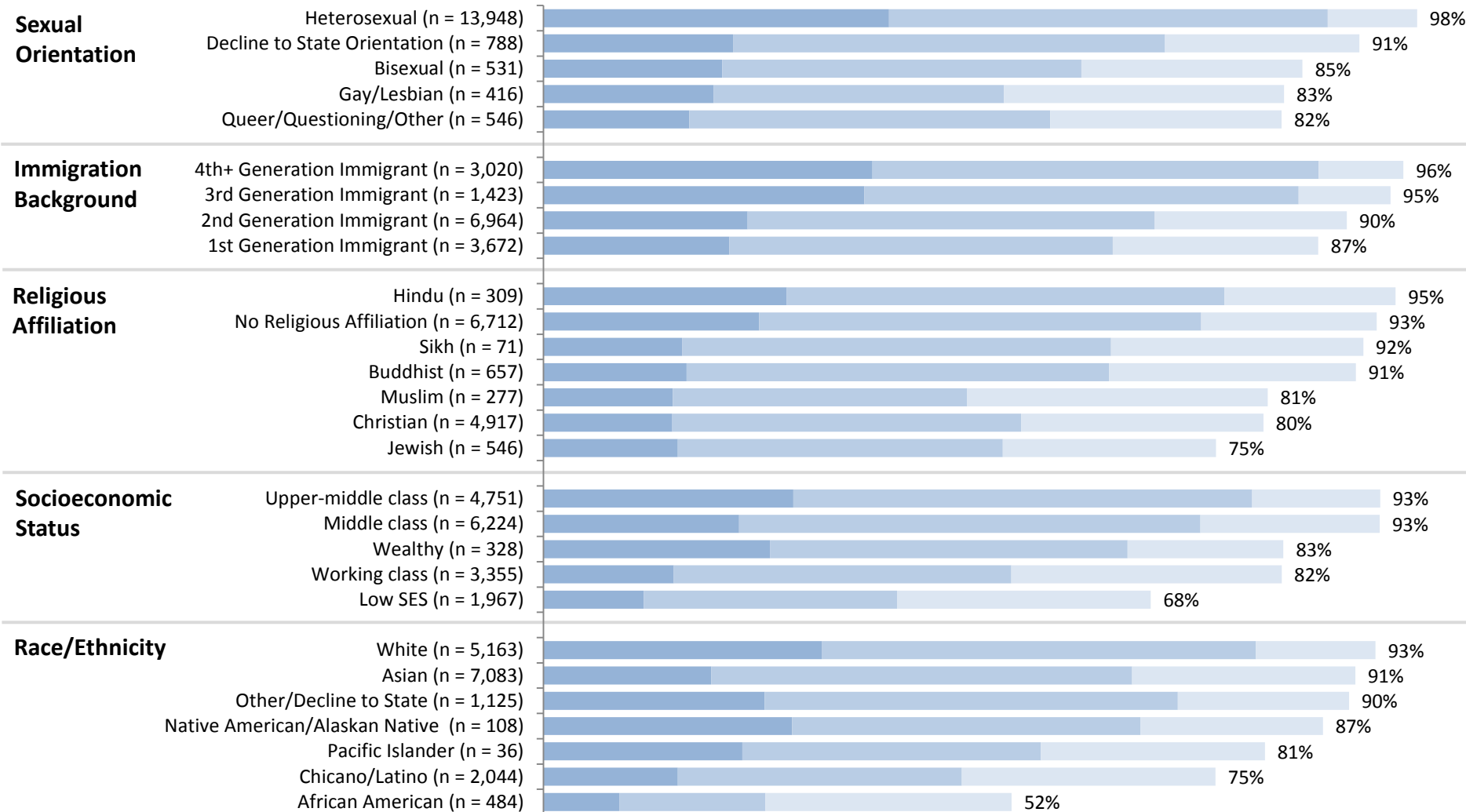
African American



How Do Respect Rates Vary Across Groups?

Percent agreement with “students of my [affinity group] are respected at the is campus” for UC Berkeley students by affinity group, 2008-2012

Strongly Agree Agree Somewhat Agree



Source: UCUES, UC Berkeley, 2008-2012